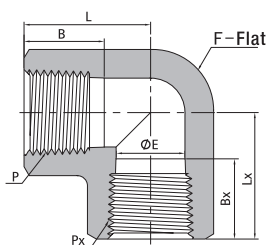
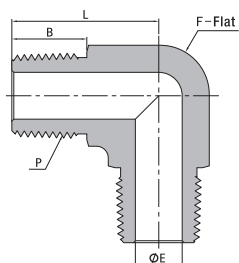


内螺纹直角接头



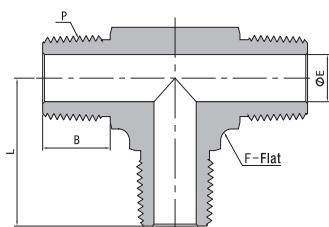
NPT 内螺纹接头			尺寸mm						工作压力 psig (bar)		
P-NPT 尺寸	Px-NPT 尺寸	基本订购信息	L	F	B	E	Lx	Bx	316 不锈钢, 碳钢		黄铜
									1/16	1/16	F1-VS
1/8	1/16	F2F1-VS	26.4	12.7	10.4	4.8	26.4	9.9	6200 (427)	3100 (213)	
1/8	1/8	F2-VS	26.4	12.7	10.4	8.6	26.4	10.4	6200 (427)	3100 (213)	
1/4	1/8	F4F2-VS	29.7	17.5	15.0	7.1	29.7	10.4	7200 (496)	3600 (248)	
1/4	1/4	F4-VS	29.7	17.5	15.0	11.4	29.7	15.0	7200 (496)	3600 (248)	
3/8	3/8	F6-VS	36.1	20.6	15.0	15.0	36.1	15.0	5600 (385)	2800 (192)	
1/2	1/2	F8-VS	39.6	25.4	19.8	18.5	39.6	19.8	5600 (385)	2800 (192)	
3/4	3/4	F12-VS	48.8	31.8	20.6	23.9	48.8	20.6	5100 (351)	2500 (172)	
1	1	F16-VS	48.5	42.9	25.4	29.7	48.5	25.4	6400 (440)	3200 (220)	
1 1/4	1 1/4	F20-VS	59.8	50.8	25.4	27.7	50.8	25.4	3100 (213)	1600 (110)	
1 1/2	1 1/2	F24-VS	65.0	63.5	27.7	34.0	52.8	27.7	5100 (351)	2500 (172)	

外螺纹直角两通接头



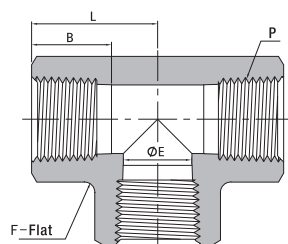
NPT 外螺纹			尺寸mm				工作压力 psig (bar)		
P-NPT 尺寸	基本订购信息		L	F	B	E	316 不锈钢, 碳钢		黄铜
							1/16	M1-VS	18.3
1/8	M2-VS	22.4	11.1	9.7	4.8	10000 (689)	5000 (344)		
1/4	M4-VS	26.7	12.7	14.2	7.1	8000 (551)	4000 (275)		
3/8	M6-VS	29.7	17.5	14.2	9.6	7800 (537)	3900 (268)		
1/2	M8-VS	36.8	20.6	19.1	11.9	7700 (530)	3800 (261)		
3/4	M12-VS	40.4	27.0	19.1	15.7	7300 (502)	3600 (248)		
1	M16-VS	50.0	34.9	23.9	22.4	5300 (365)	2600 (179)		

外螺纹三通接头



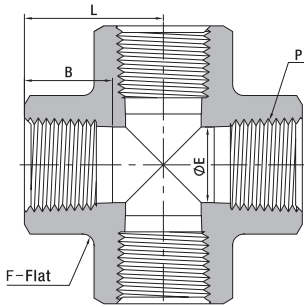
NPT 外螺纹			尺寸mm				工作压力 psig (bar)		
P-NPT 尺寸	基本订购信息		L	F	B	E	316 不锈钢, 碳钢		黄铜
							1/16	M1-TS	18.3
1/8	M2-TS	22.4	11.1	9.7	4.8	10000 (689)	5000 (344)		
1/4	M4-TS	26.7	12.7	14.2	7.1	8000 (551)	4000 (275)		
3/8	M6-TS	29.7	17.5	14.2	9.6	7800 (537)	3900 (268)		
1/2	M8-TS	36.8	20.6	19.1	11.9	7700 (530)	3800 (261)		
3/4	M12-TS	42.4	27.0	19.1	15.7	7300 (502)	3600 (248)		
1	M16-TS	49.3	34.9	23.9	22.4	5300 (365)	2600 (179)		
1 1/4	M20-TS	56.4	42.9	23.9	27.7	6000 (410)	3000 (200)		
1 1/2	M24-TS	67.1	47.6	26.2	34.0	5000 (344)	2500 (172)		

内螺纹三通接头



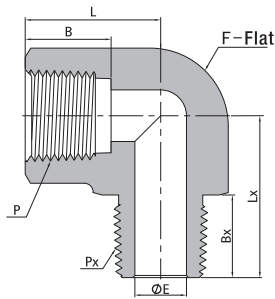
NPT 内螺纹			尺寸mm				工作压力 psig (bar)		
P-NPT 尺寸	基本订购信息		L	F	E	B	316 不锈钢, 碳钢		黄铜
							1/16	F1-TS	21.8
1/8	F2-TS	26.4	12.7	8.6	10.4	6200 (427)	3100 (213)		
1/4	F4-TS	29.7	17.5	11.4	15.0	7200 (496)	3600 (248)		
3/8	F6-TS	36.1	20.6	15.0	15.0	5600 (385)	2800 (192)		
1/2	F8-TS	39.6	25.4	18.5	19.8	5600 (385)	2800 (192)		
3/4	F12-TS	48.8	31.8	23.9	20.6	5100 (351)	2500 (172)		
1	F16-TS	48.5	42.9	29.7	25.4	6400 (440)	3200 (220)		
1 1/4	F20-TS	59.8	50.8	37.2	25.4	3100 (213)	1600 (110)		
1 1/2	F24-TS	65.0	63.5	43.3	27.7	5100 (351)	2500 (172)		

内螺纹四通接头



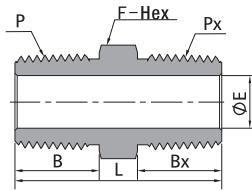
NPT 内螺纹		尺寸mm				工作压力 psig (bar)		
P-NPT 尺寸	基本订购信息	L	F	E	B	316 不锈钢, 碳钢		黄铜
						1/16	F1-CS	
1/8	F2-CS	26.4	12.7	8.6	10.4	6200 (427)	3100 (213)	
1/4	F4-CS	29.7	17.5	11.4	15.0	7200 (496)	3600 (248)	
3/8	F6-CS	36.1	20.6	15.0	15.0	5600 (385)	2800 (192)	
1/2	F8-CS	39.6	25.4	18.5	19.8	5600 (385)	2800 (192)	
3/4	F12-CS	48.8	31.8	23.9	20.6	5100 (351)	2500 (172)	
1	F16-CS	48.5	42.9	29.7	25.4	6400 (440)	3200 (220)	

内螺纹转外螺纹直角两通接头



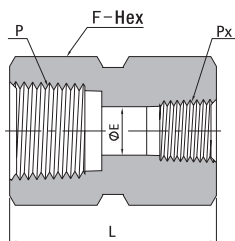
NPT 内螺纹			NPT 外螺纹								工作压力 psig (bar)	
P-NPT 尺寸	Px-NPT 尺寸	基本订购信息	尺寸mm						316 不锈钢, 碳钢		黄铜	
			L	F	B	E	Lx	Bx				
1/16	1/16	F1M1-VS	21.8	11.1	9.9	3.0	22.4	9.7	9200 (633)	4600 (316)		
1/16	1/8	F1M2-VS	21.8	11.1	9.9	4.8	22.4	9.7	9200 (633)	4600 (316)		
1/16	1/4	F1M4-VS	22.4	14.3	9.9	4.8	27.7	14.2	8000 (551)	4000 (275)		
1/16	3/8	F1M6-VS	22.4	17.5	9.9	4.8	29.7	14.2	7800 (537)	3900 (268)		
1/8	1/16	F2M1-VS	26.4	12.7	10.4	3.0	22.1	9.7	6200 (426)	3100 (213)		
1/8	1/8	F2M2-VS	26.4	12.7	10.4	4.8	22.1	9.7	6200 (426)	3100 (213)		
1/8	1/4	F2M4-VS	22.4	14.3	10.4	7.1	27.7	14.2	6500 (447)	3200 (220)		
1/8	3/8	F2M6-VS	22.4	17.5	10.4	7.1	29.7	14.2	7800 (537)	3900 (268)		
1/8	1/2	F2M8-VS	24.1	20.6	10.4	7.1	36.8	19.1	7700 (530)	3800 (261)		
1/8	3/4	F2M12-VS	25.4	27.0	10.4	7.1	40.4	19.1	7300 (502)	3600 (248)		
1/8	1	F2M16-VS	26.4	34.9	10.4	7.1	50.0	23.9	5300 (365)	2600 (179)		
1/4	1/8	F4M2-VS	29.7	17.5	15.0	4.8	25.4	9.7	7200 (496)	3600 (248)		
1/4	1/4	F4M4-VS	29.7	17.5	15.0	7.1	29.7	14.2	7200 (496)	3600 (248)		
1/4	3/8	F4M6-VS	29.7	17.5	15.0	8.6	29.7	14.2	7200 (496)	3600 (248)		
1/4	1/2	F4M8-VS	25.4	20.6	15.0	8.6	36.8	19.1	7200 (496)	3600 (248)		
1/4	3/4	F4M12-VS	25.4	27.0	15.0	8.6	40.4	19.1	7300 (502)	3600 (248)		
1/4	1	F4M16-VS	41.4	34.9	15.0	8.6	50.0	23.9	5300 (365)	2600 (179)		
3/8	1/4	F6M4-VS	36.1	20.6	15.0	7.1	32.0	14.2	5600 (385)	2800 (192)		
3/8	3/8	F6M6-VS	36.1	20.6	15.0	9.6	32.0	14.2	5600 (385)	2800 (192)		
3/8	1/2	F6M8-VS	36.1	20.6	15.0	11.9	36.8	19.1	5600 (385)	2800 (192)		
3/8	3/4	F6M12-VS	31.2	27.0	15.0	11.9	40.4	19.1	7300 (502)	3600 (248)		
3/8	1	F6M16-VS	41.4	34.9	15.0	11.9	50.0	23.9	5300 (365)	2600 (179)		
1/2	1/4	F8M4-VS	39.6	25.4	19.8	7.1	35.1	14.2	5600 (385)	2800 (192)		
1/2	3/8	F8M6-VS	39.6	25.4	19.8	9.6	35.1	14.2	5600 (385)	2800 (192)		
1/2	1/2	F8M8-VS	39.6	25.4	19.8	11.9	39.6	19.1	5600 (385)	2800 (192)		
1/2	3/4	F8M12-VS	31.2	27.0	19.8	15.7	40.4	19.1	5600 (385)	2800 (192)		
1/2	1	F8M16-VS	41.4	34.9	19.8	15.7	50.0	23.9	5300 (365)	2600 (179)		
3/4	3/4	F12M12-VS	48.8	31.8	20.6	15.7	42.4	19.1	5100 (351)	2500 (172)		
3/4	1	F12M16-VS	41.4	34.9	20.6	22.4	50.0	23.9	5100 (351)	2500 (172)		
1	1	F16M16-VS	48.5	42.9	25.4	22.4	49.3	23.9	5300 (365)	2600 (179)		
1 1/4	1 1/4	F20M20-VS	60.5	50.8	25.4	31.8	60.5	23.9	3100 (213)	1600 (110)		

外螺纹直通接头



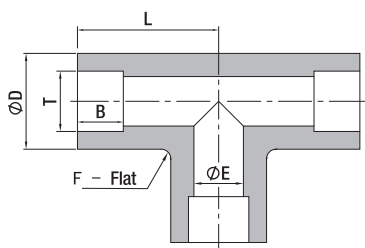
NPT 外螺纹									
P-NPT 尺寸	Px-NPT 尺寸	基本订购信息	尺寸mm					工作压力 psig (bar)	
			L	F	B	Bx	E	316 不锈钢, 碳钢	黄铜
1/16	1/16	M1-US	25.6	7.9	9.7	9.7	3.0	11000 (757)	5500 (378)
1/8	1/16	M2M1-US	25.6	11.1	9.7	9.7	3.0	11000 (757)	5500 (378)
1/8	1/8	M2-US	25.6	11.1	9.7	9.7	4.8	10000 (689)	5000 (344)
1/4	1/16	M4M1-US	31.0	14.3	14.2	9.7	3.0	11000 (757)	5500 (378)
1/4	1/8	M4M2-US	31.0	14.3	14.2	9.7	4.8	10000 (689)	5000 (344)
1/4	1/4	M4-US	35.6	14.3	14.2	14.2	7.1	8000 (551)	4000 (275)
3/8	1/16	M6M1-US	31.8	17.5	14.2	9.7	3.0	11000 (757)	5500 (378)
3/8	1/8	M6M2-US	31.8	17.5	14.2	9.7	4.8	10000 (689)	5000 (344)
3/8	1/4	M6M4-US	36.3	17.5	14.2	14.2	7.1	8000 (551)	4000 (275)
3/8	3/8	M6-US	36.3	17.5	14.2	14.2	9.7	7800 (537)	3900 (268)
1/2	1/8	M8M2-US	37.3	22.2	19.1	9.7	4.8	7700 (530)	3800 (261)
1/2	1/4	M8M4-US	41.9	22.2	19.1	14.2	7.1	8000 (551)	4000 (275)
1/2	3/8	M8M6-US	41.9	22.2	19.1	14.2	9.7	7800 (537)	3900 (268)
1/2	1/2	M8-US	46.7	22.2	19.1	19.1	11.9	7700 (530)	3800 (261)
3/4	1/8	M12M2-US	40.4	27.0	19.1	9.7	4.8	10000 (689)	5000 (344)
3/4	1/4	M12M4-US	41.9	27.0	19.1	14.2	7.1	8000 (551)	4000 (275)
3/4	3/8	M12M6-US	45.2	27.0	19.1	14.2	9.7	7800 (537)	3900 (268)
3/4	1/2	M12M8-US	46.7	27.0	19.1	19.1	11.9	7700 (530)	3800 (261)
3/4	3/4	M12-US	46.7	27.0	19.1	19.1	15.7	7300 (502)	3600 (248)
1	1/8	M16M2-US	45.2	34.9	23.9	9.7	4.8	10000 (689)	5000 (344)
1	1/4	M16M4-US	49.3	34.9	23.9	14.2	7.1	5300 (365)	2600 (179)
1	3/8	M16M6-US	50.0	34.9	23.9	14.2	9.7	7800 (537)	3900 (268)
1	1/2	M16M8-US	54.1	34.9	23.9	19.1	11.9	7700 (530)	3800 (261)
1	3/4	M16M12-US	54.1	34.9	23.9	19.1	15.7	7300 (502)	3600 (248)
1	1	M16-US	58.9	34.9	23.9	23.9	22.4	5300 (365)	2600 (179)
1 1/4	1	M20M16-US	62.2	44.5	23.9	23.9	22.4	5300 (365)	2600 (179)
1 1/4	1 1/4	M20-US	62.9	44.5	23.9	23.9	28.6	6000 (410)	3000 (200)
1 1/2	1 1/2	M24-US	66.3	50.8	26.2	26.2	34.0	5000 (344)	2500 (172)
2	2	M32-US	77.7	69.9	26.2	26.2	45.0	3900 (268)	1900 (130)

内螺纹直通接头



NPT 内螺纹									
P-NPT 尺寸	Px-NPT 尺寸	基本订购信息	尺寸mm			工作压力 psig (bar)			
			L	F	E	316 不锈钢, 碳钢	黄铜		
1/16	1/16	F1-US	19.8	11.1	4.8	6700 (460)	3300 (227)		
1/8	1/8	F2-US	20.6	14.3	8.6	6500 (447)	3200 (220)		
1/4	1/8	F4F2-US	31.0	19.1	8.6	6600 (454)	3300 (227)		
1/4	1/4	F4-US	30.2	19.1	11.4	6600 (454)	3300 (227)		
3/8	1/4	F6F4-US	35.1	22.2	11.4	5300 (365)	3300 (227)		
3/8	3/8	F6-US	33.3	22.2	15.0	5300 (365)	2600 (179)		
1/2	1/8	F8F2-US	39.6	27.0	8.6	4900 (337)	2600 (179)		
1/2	1/4	F8F4-US	44.4	27.0	11.4	4900 (337)	2400 (165)		
1/2	3/8	F8F6-US	45.2	27.0	15.0	4900 (337)	2400 (165)		
1/2	1/2	F8-US	39.6	27.0	18.5	4900 (337)	2400 (165)		
3/4	1/4	F12F4-US	46.0	33.3	11.4	4600 (316)	2400 (165)		
3/4	1/2	F12F8-US	52.3	33.3	18.5	4600 (316)	2400 (165)		
3/4	3/4	F12-US	41.1	33.3	23.9	4600 (316)	2300 (158)		
1	1/2	F16F8-US	55.6	41.3	18.5	4400 (303)	2300 (158)		
1	3/4	F16F12-US	57.2	41.3	23.9	4400 (303)	2300 (158)		
1	1	F16-US	50.8	41.3	29.7	4400 (303)	2200 (151)		
1/4	1/4	F4-US	30.2	25.4	11.4	10000 (689)	2200 (151)		
1/2	1/2	F8-US	39.6	38.1	18.5	10000 (689)	2200 (151)		
1/2	1/4	F8F4-US	44.4	38.1	11.4	10000 (689)	2200 (151)		

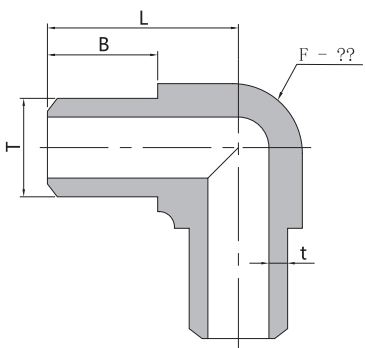
插焊三通接头



英制								
T-Tube 尺寸 (in.)	基本订购信息	尺寸mm					工作压力 psig (bar)	
		L	D	B	F	E		
1/8	SW2-TS	15.0	12.8	2.5	9.5	2.3	12600 (868)	
1/4	SW4-TS	21.8	12.8	7.1	11.1	4.8	10700 (737)	
3/8	SW6-TS	26.4	16.5	7.9	14.3	7.1	8100 (558)	
1/2	SW8-TS	29.7	20.2	9.7	17.5	10.4	6600 (454)	
5/8	SW10-TS	36.1	23.8	10.4	20.6	12.7	6200 (428)	
3/4	SW12-TS	39.6	29.3	11.2	25.4	16.0	5900 (406)	
1	SW16-TS	48.8	36.7	15.7	31.8	22.4	5600 (385)	

公制								
T-Tube 尺寸 (mm)	基本订购信息	尺寸mm					工作压力 psig (bar)	
		L	D	B	F	E		
8	SW08-TS	19.8	14.7	7.9	12.7	6.4	9790 (675)	
10	SW10-TS	24.6	16.5	7.9	14.3	7.4	8100 (558)	
12	SW12-TS	29.7	20.2	9.7	17.5	9.5	6820 (470)	
14	SW14-TS	31.7	23.8	10.0	20.6	10.4	6930 (478)	
16	SW16-TS	36.0	23.8	10.4	20.6	12.7	6190 (426)	
20	SW20-TS	39.6	29.3	11.2	25.4	17.0	5510 (380)	
22	SW22-TS	41.3	31.2	13.5	27.0	19.0	6850 (472)	
25	SW25-TS	48.8	36.7	15.7	31.8	22.0	5450 (376)	

对焊直角两通接头



英制							
T-Tube 尺寸 (in.)	t-壁厚 (in.)	基本订购信息	尺寸mm			工作压力 psig (bar)	
			L	B	F		
1/4	0.065	BW4-VS	16.3	9.7	9.5	10320 (712)	
3/8	0.095	BW6-VS	18.0	9.7	11.1	9930 (685)	
1/2	0.095	BW8-VS	24.4	14.2	14.3	6780 (468)	
3/4	0.120	BW12-VS	33.3	19.1	20.6	5530 (381)	
1	0.134	BW16-VS	37.1	19.1	27.0	4480 (309)	

公制							
T-Tube 尺寸 (mm)	t-壁厚 (mm)	基本订购信息	尺寸mm			工作压力 psig (bar)	
			L	B	F		
10	2.2	BW010-VS	18.0	9.7	11.1	8160 (563)	
14	2.5	BW014-VS	25.4	14.2	15.9	6280 (433)	
16	2.8	BW016-VS	26.2	14.2	17.5	6140 (423)	
20	3.0	BW020-VS	33.3	19.1	20.6	5110 (352)	
22	3.0	BW022-VS	35.3	19.1	23.8	4620 (319)	
25	3.5	BW025-VS	37.1	19.1	27.0	4730 (326)	